



£285,000

2 Bedroom Detached Bungalow for sale
111 Ash Tree Road, Barton-Under-Needwood



EweMove
SALES AND LETTINGS



Overview

BOOK YOUR VIEWING VIA OUR EWEMOVE WEBSITE OR CALL 24/7!
 Welcome to this beautifully modernised bungalow, perfectly situated in a highly sought-after village. The kitchen/diner provides a scenic view of the stunning garden, which also features a newly constructed garden room/workshop.



Key Features

- Beautifully Decorated Throughout
- Refitted Shower Room
- Extended Kitchen/Diner
- Spacious Living Room
- Master Bedroom With Fitted Wardrobes
- Parking & Garage
- Attractive Rear Garden - Plus Garden Room/Workshop
- Popular Village Location
- VIEWING ESSENTIAL
- BOOK YOUR VIEWING VIA OUR EWEMOVE WEBSITE OR CALL 24/7!





Upon arrival, you'll find a private driveway capable of accommodating up to three cars, leading to a single garage. Step inside the spacious entrance hall guiding you to the second bedroom which is currently utilised as an office with a "Study Bed" that pulls down into a double bed. The generous size lounge boasts a contemporary wall-mounted gas fire and a large front-facing window, filling the room with natural light.

The original bathroom has been thoughtfully transformed into a stylish shower room, complete with a quadrant shower enclosure, a low-level w.c, and a wash hand basin.

Moving to the rear of the property, you'll discover the master bedroom, offering ample storage with its built-in wardrobes. The kitchen has been expanded, creating a spacious kitchen/diner with French doors that open up to the attractive rear garden. Equipped with a range of fitted units, the kitchen also features an integrated eye-level oven, an induction hob with an extractor fan, and provisions for a fridge/freezer, washing machine, and dishwasher.



The rear garden is a peaceful retreat, boasting a delightful patio area and a well-maintained lawn adorned with mature trees and shrubs. Tucked away at the bottom of the garden, a newly built garden room/workshop awaits, providing power and lighting for a variety of potential uses.

Ideally located in Barton under Needwood, this property benefits from an excellent range of nearby shops and amenities, all within walking distance. Additionally, the highly popular Barton Marina is less than a mile away, offering a charming destination for leisurely pursuits. The village itself boasts a character-filled high street with traditional pubs, a cafe, the Co-Op general store, and boutique gift shops.

For convenient transportation, a regular bus route runs through the village, granting easy access to neighboring villages and towns, including Burton

on Trent and the historic Cathedral City of Lichfield.

Don't miss this incredible opportunity to make this beautifully modernised bungalow your new home. Schedule a viewing now to fully appreciate all that this property and its desirable location have to offer.

Floorplans

GROUND FLOOR
1013 sq.ft. (94.1 sq.m.) approx.

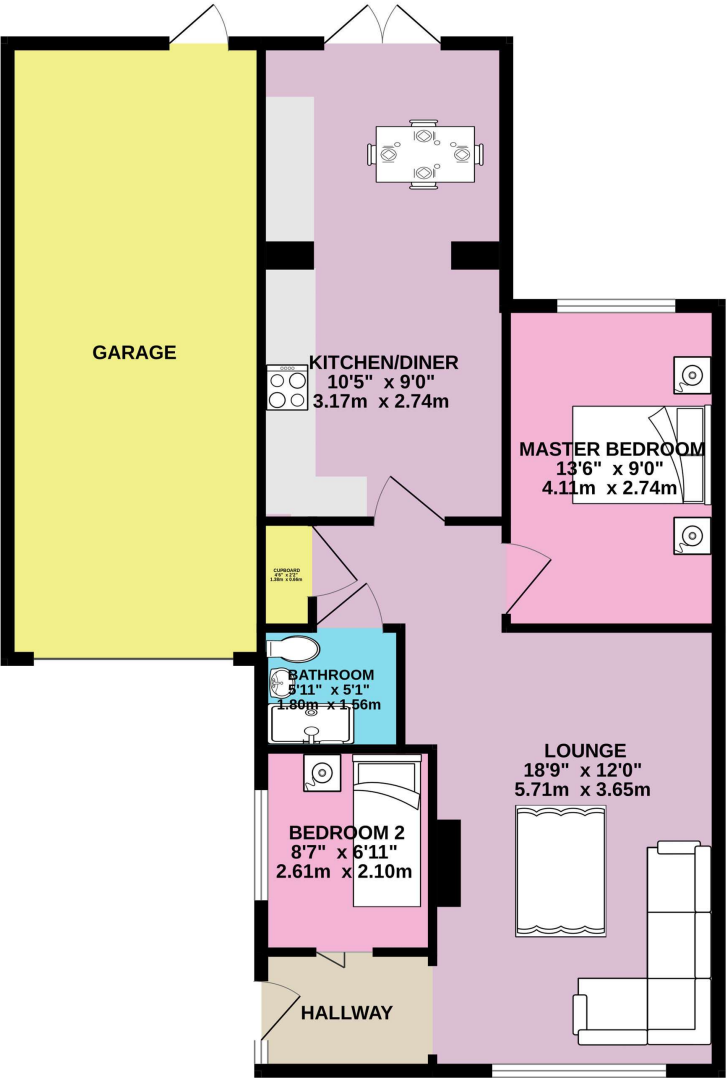


For illustrative purposes only. Decorative finishes, fixtures, fittings and furnishings do not represent the current state of the property. Measurements are approximate. Not to scale.

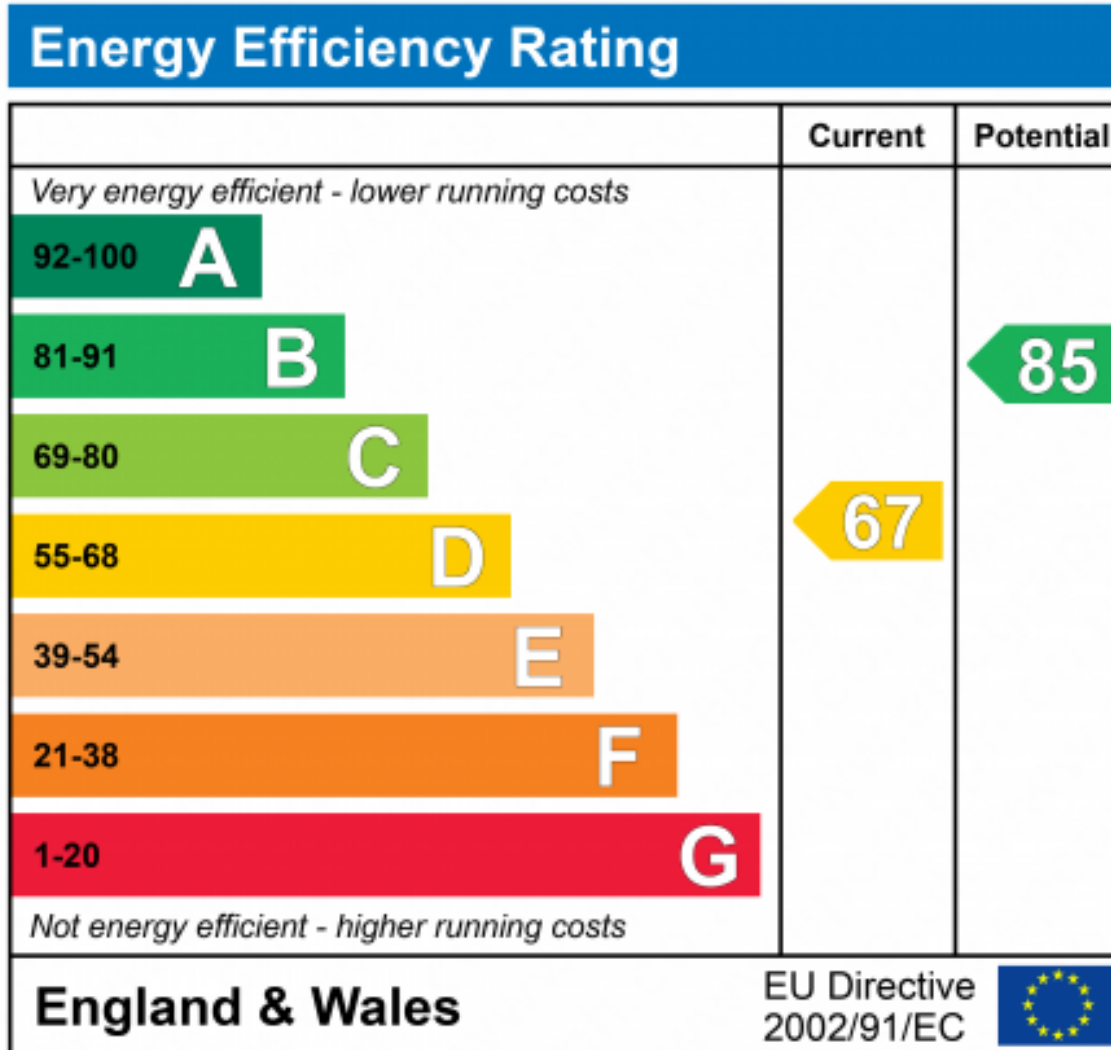
Made with Metropix © 2023

Floorplans

GROUND FLOOR



Whilst every attempt has been made to ensure the accuracy of the floorplan contained here, measurements of doors, windows, rooms and any other items are approximate and no responsibility is taken for any error, omission or mis-statement. This plan is for illustrative purposes only and should be used as such by any prospective purchaser. The services, systems and appliances shown have not been tested and no guarantee as to their operability or efficiency can be given.
Made with Metropix ©2023





Marketed by EweMove Lichfield

01543 624118 (24/7)
lichfield@ewemove.com



EweMove
SALES AND LETTINGS